

(see attached – Monterey Division Service Area Detail Map 4 Seaside)

(TO BE INSERTED BY UTILITY)
ADVICE LETTER NO. 739
DECISION NO. _____

ISSUED BY
D. P. STEPHENSON
NAME
DIRECTOR - RATES & PLANNING
TITLE

(TO BE INSERTED BY C.P.U.C.)
DATE FILED MAR 16 2009
EFFECTIVE APR 13 2009
RESOLUTION NO. _____

MONTEREY DIVISION
SERVICE AREA
DETAIL 5
LOWER CARMEL



CALIFORNIA
AMERICAN WATER

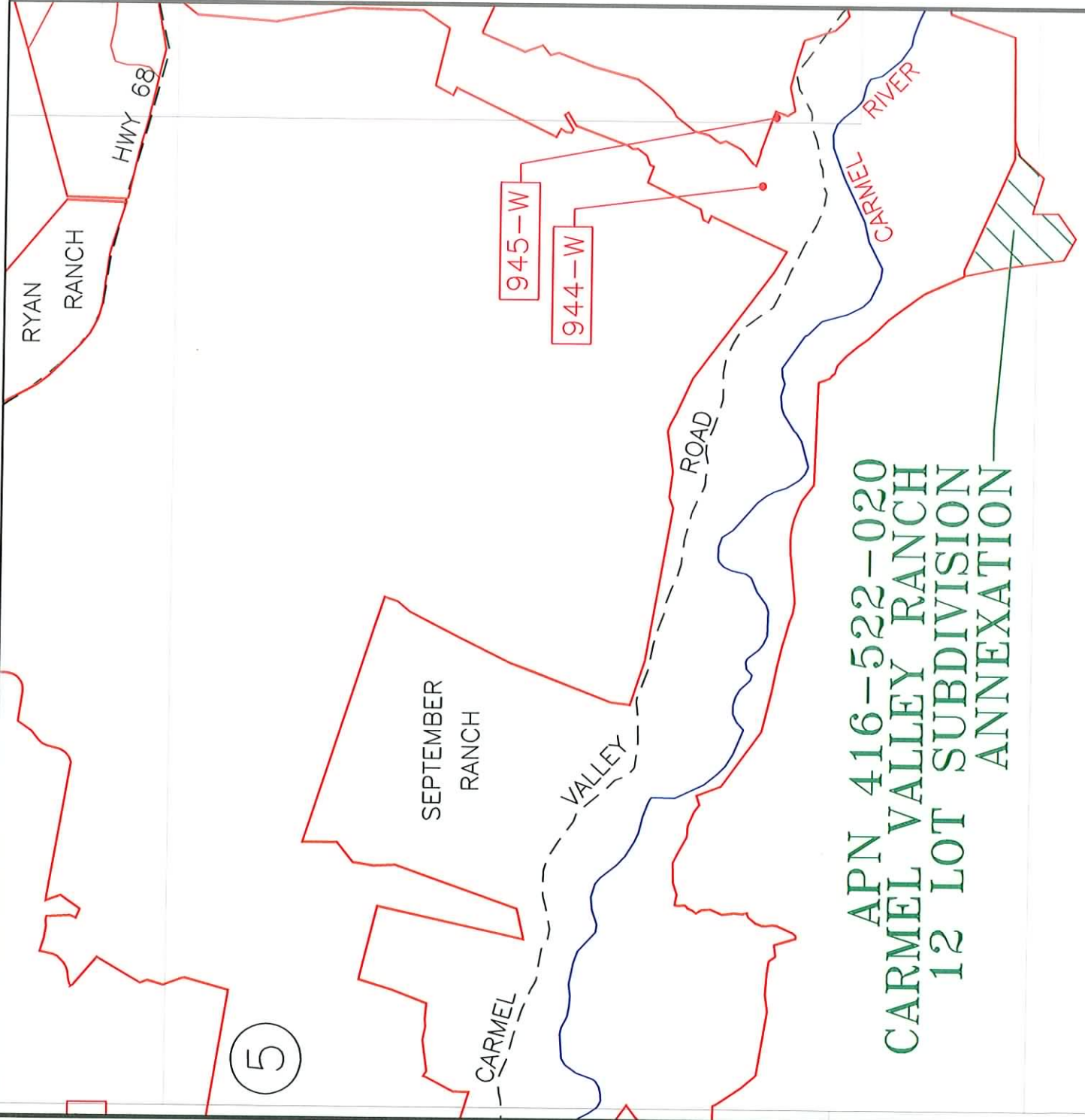
Central Division
511 Forest Lodge Road, Suite 100
Pacific Grove, CA 93950

- EXISTING WATER SERVICE AREA
- ADDITION TO WATER SERVICE AREA
- DELETION FROM SERVICE AREA
- DETAILED SERVICE AREA MAPS
- G.O. 103 LOW PRESSURE AREAS
- SERVICE AREA BOUNDARY



NOT TO SCALE

Revised: 01-26-09



APN 416-522-020
CARMEL VALLEY RANCH
12 LOT SUBDIVISION
ANNEXATION