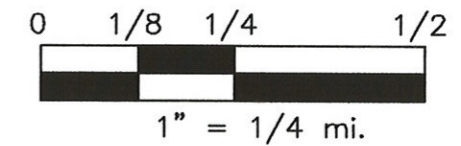


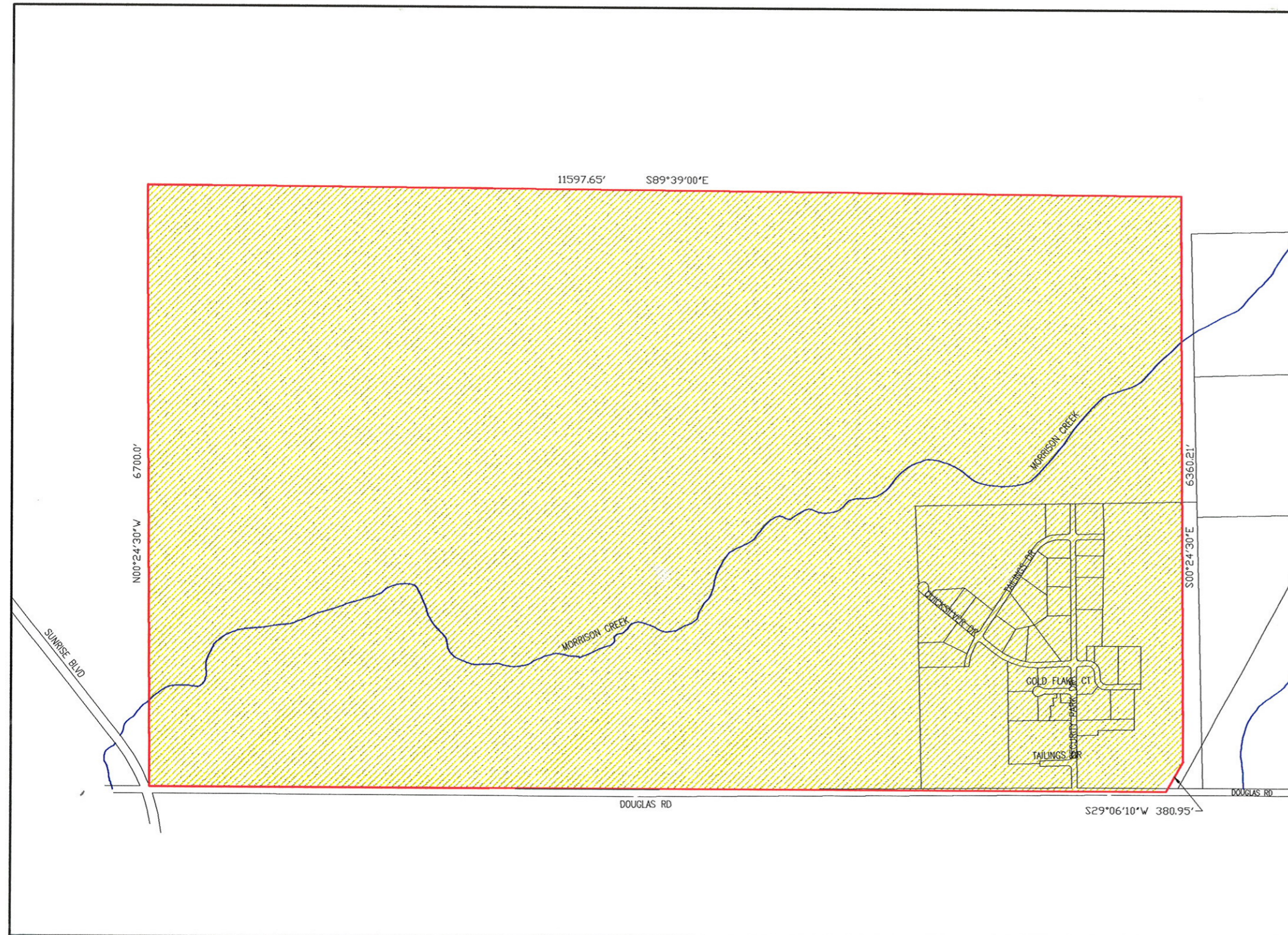
SACRAMENTO DISTRICT
 SERVICE AREA
 DETAIL MAP 7
 SUNRISE



- EXISTING SERVICE AREA
- ADDITION TO SERVICE AREA
- DELETION FROM SERVICE AREA
- SERVICE AREA BOUNDARY



N:\Tariff Maps\SAC.COUNTY\7 Sunrise.dwg



(TO BE INSERTED BY UTILITY)

ADVICE LETTER NO. 569

ISSUED BY

D. P. STEPHENSON
 NAME

(TO BE INSERTED BY C.P.U.C.)

DATE FILED NOV - 1 2002
 EFFECTIVE NOV - 6 2002

DECISION NO. 01-09-057

DIRECTOR - RATES & REVENUES
 TITLE

RESOLUTION NO.