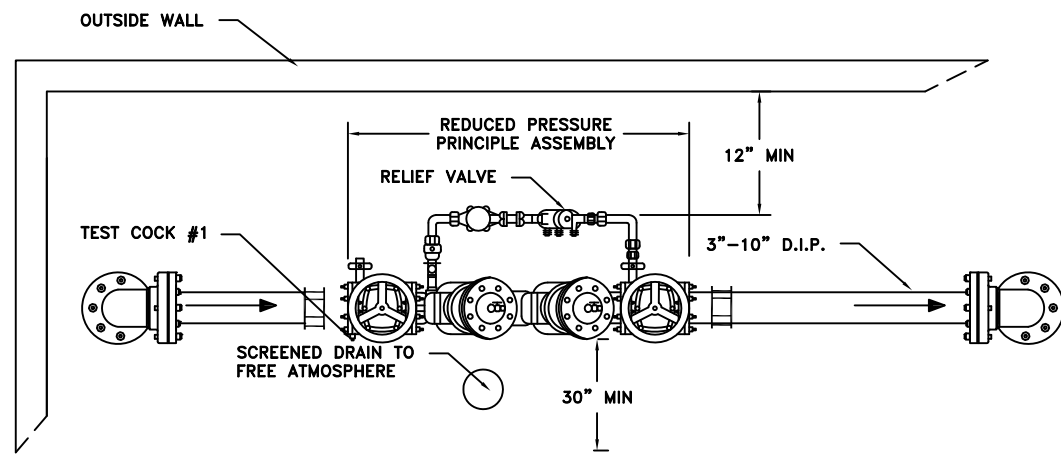


ELEVATION



PLAN

## >2" REDUCED PRESSURE PRINCIPLE DECTECTOR BACKFLOW PREVENTER-INTERIOR

**NOTES:**

1. TEST COCK #1 SHALL BE UPSTREAM OF SHUT OFF VALVE #1 AND IS PART OF THE APPROVED ASSEMBLY.
2. ALL PIPE 3"-10" RP SHALL BE D.I.P. FROM THE TAP AT THE MAIN TO 5' PAST SHUT OFF VALVE #2.
3. A STRAINER IS RECOMMENDED ON THE INLET SIDE TO PREVENT TRASH & DEBRIS FROM FOULING THE RP. NO STRAINER IS ALLOWED ON A FIRE SERVICE LINE.
4. RESTRAINED JOINTS SHALL BE WITH MEGA LUG RESTRAINTS, OR APPROVED EQUAL.
5. FIRE LINE AND COMBINATION OF FIRE AND DOMESTIC INSTALLATION SHALL HAVE OUTSIDE STEM AND YOKE (OS & Y) HANDWHEEL OPERATOR.
6. DRAIN PIPE SHALL BE SIZED ACCORDING TO THE MANUFACTURERS FLOW CURVE TO DETERMINE THE MAXIMUM DISCHARGE RATE.

REVISIONS
12/13 - MSG EDITS
01/16 - MSG EDITS

AMERICAN WATER STANDARD  
CIVIL  
>2" BACKFLOW PREVENTER-INTERIOR  
REDUCED PRESSURE PRINCIPLE DETECTOR

AMERICAN WATER  
CAMDEN, NJ 08102

AMERICAN WATER M.S.G.  
1 WATER STREET  
CAMDEN, NJ 08102



DRAWN BY JRQ  
PROJECT ENG'R PDK  
APPROVED

DATE 12-06-11  
PROJECT IP

USE DIMENSIONS ONLY  
SCALE N.T.S.

USE APPROVED DRAWINGS ONLY  
FOR CONSTRUCTION PURPOSES

MSG-W-24

FINAL

MSG-W-24