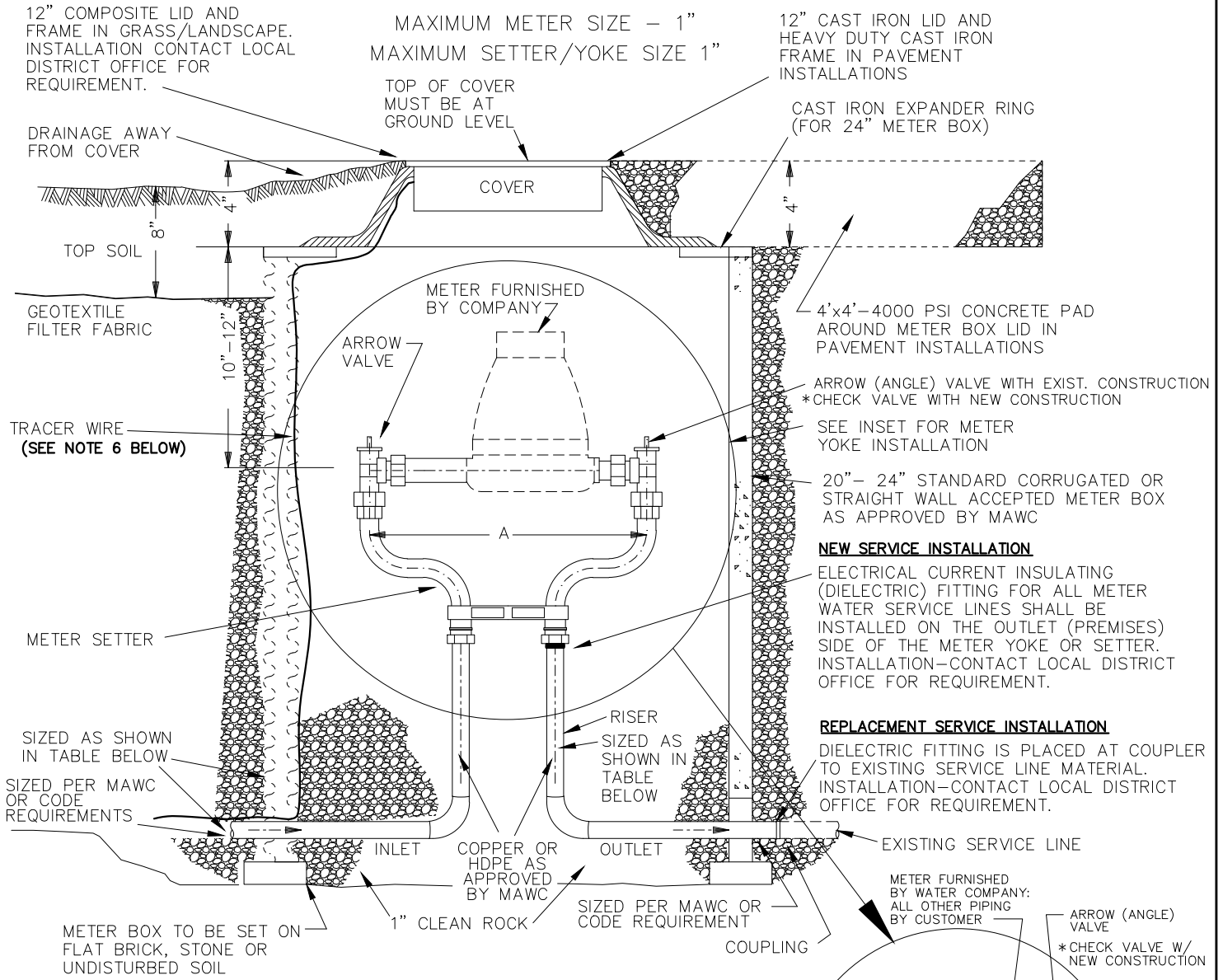




**MISSOURI  
AMERICAN WATER**

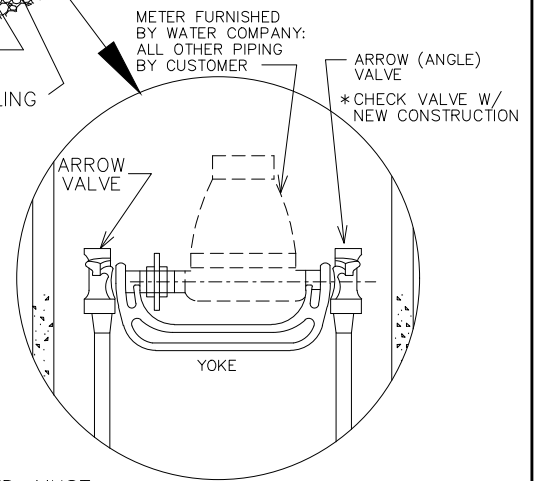
FILE NO. \_\_\_\_\_  
 INDEX NO. \_\_\_\_\_  
 ISSUED DATE 03/2023  
 AMENDED DATE 03/2024



SERVICE SIZE-IN.	DIMENSIONS-A-IN.	YOKE SIZES	RISER SIZE-IN.	METER BOX I.D. AT YOKE
3/4"	12-1/8	3/4"	3/4"	20"- 24"
1"	13-7/8	1"	1"	24"

**NOTES :**

1. ARROW VALVE REQUIRED ON BOTH SIDES OF METER.
2. COPPER OF APPROPRIATE SIZE TO EXTEND MIN. 4' FROM OUTLET SIDE OF METER BOX.
3. IF HDPE SERVICE LINE MATERIAL IS UTILIZED, THE CORRECT METER SETTER TO BE USED WITH HDPE PIPING.
4. METER SETTER OR METER YOKE TO BE UTILIZED PER DISTRICT REQUIREMENTS.
5. PROVIDE 1" CLEAN ROCK BACKFILL ON EXCAVATIONS.
6. TRACER WIRE TO BE INSTALLED WHEN HDPE SERVICE LINE MATERIAL IS INSTALLED. MUST BE INSTALLED FROM "CORPORATION" UP TO TOP OF METER BOX INSTALLATION.
7. PLACE GEOTEXTILE/FILTER FABRIC PER SPECIFICATION 2210.2.04 ON TOP OF THE 1" CLEAN GRANULAR BACKFILL PRIOR TO INSTALLING NATIVE OR IMPORTED TOP SOIL BACKFILL MATERIAL.



SUBJECT TO REVISION WITHOUT NOTICE 03-2024

**METER BOX FOR 3/4" UP TO 1" COMMERCIAL & RESIDENTIAL SERVICE**

PRINT AND READ DISCLAIMER WITH ALL MAWC DRAWINGS

CAD /DISTRIB/DETAILS/METERBOX/METERBOX\_20200821.DWG