



PENNSYLVANIA  
AMERICAN WATER

WE KEEP LIFE FLOWING™

Earth's water goes around and around. We call this the "water cycle." The water cycle moves water from the Earth to the air and back to the Earth again.

**PRECIPITATION:** When water falls from the sky as rain, snow or sleet onto the Earth.

**SURFACE RUNOFF:** The flow of water—from rain, snowmelt or other sources—over land.

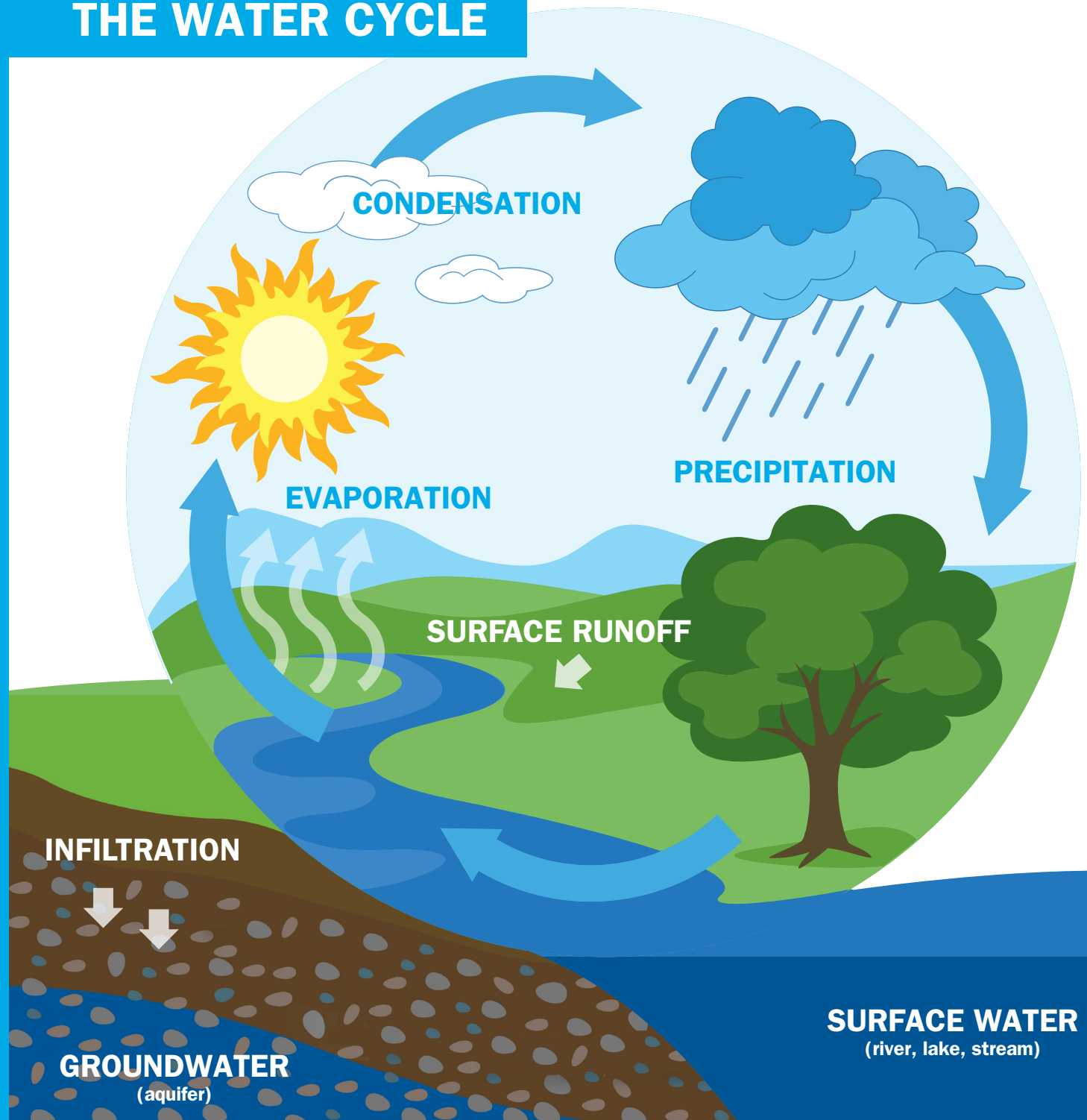
**INFILTRATION:** When the water sinks into the soil and finds its way to aquifers underground.

**SURFACE WATER:** A body of water on the surface of the earth, such as a river, lake or stream.

**EVAPORATION:** When the water turns into a gas.

**CONDENSATION:** When the water vapor condenses and forms precipitation.

# THE WATER CYCLE



SERVICE.  
ONE MORE WAY  
WE KEEP LIFE FLOWING.